

NOTES: UNLESS OTHERWISE SPECIFIED

1. FOR GENERAL SERIES SPECIFICATIONS, SEE SD74-0000.

2. MATERIAL SPECIFICATIONS:  
COPPER ALLOY

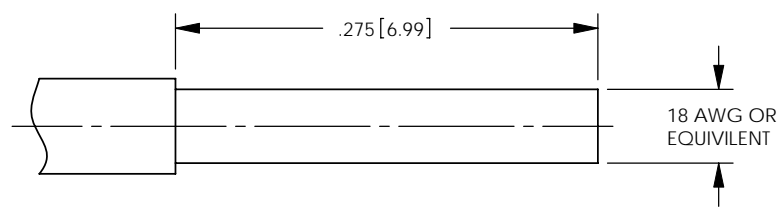
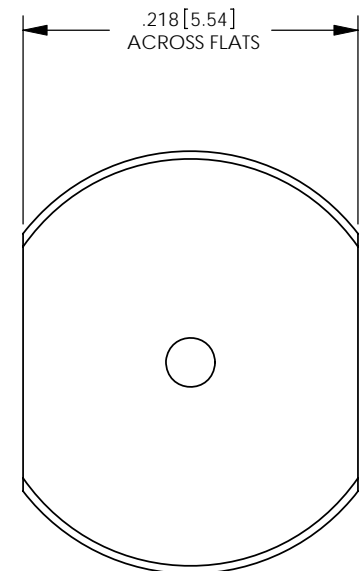
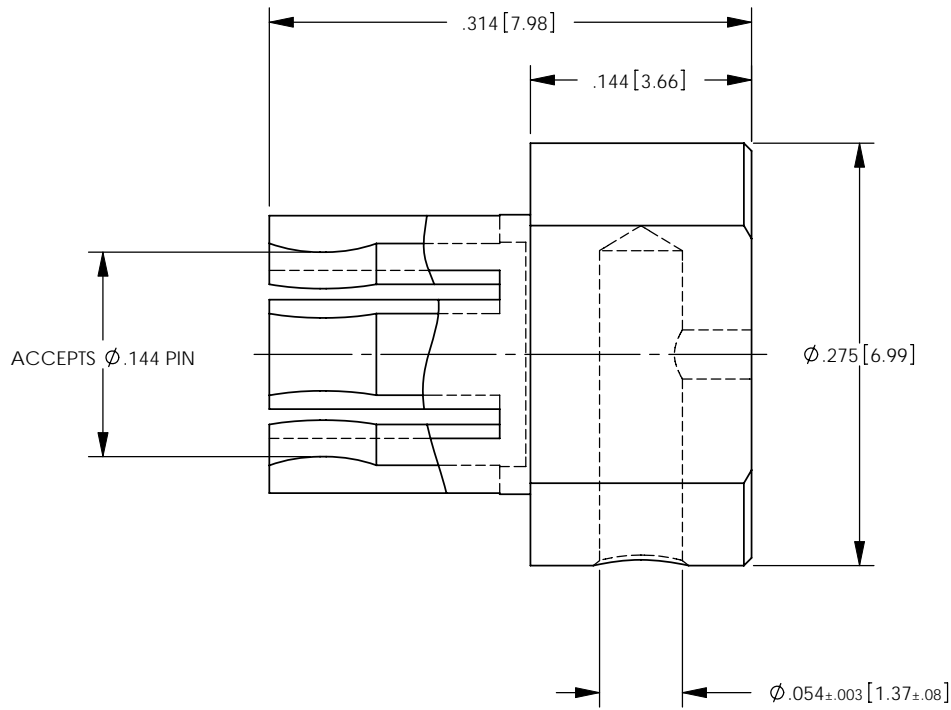
3. FINISH SPECIFICATIONS:  
.000030 MIN. GOLD PER ASTM B488 OVER .000080 MIN. NICKEL PER AMS QQ-N-290.

4. ELECTRICAL SPECIFICATIONS:  
CURRENT RATING: 10 AMPS

5. FOR USE WITH 16 AWG WIRE OR EQUIVALENT.

6. REFER TO CAP10-01 FOR CABLE ASSEMBLY PROCEDURE.

REV	DESCRIPTION	BY DATE	APPD
D	REVISED PER ER7306	L/04/11/08 CMB	CMB



RECOMMENDED CABLE TRIM DIMENSIONS

CATALOG P/N: 01432G

PER ASME Y14.5M-1994 UNLESS OTHERWISE SPECIFIED: DIMENSIONS ARE IN INCHES [MM] TOLERANCES: DECIMAL: XX [X.X] ± .01 [0.3] XXX [X.XX] ± .005 [0.13] .XXXX [X.XXX] ± .XXXX ANGLES: ± 2° SCALE: 8:1				Winchester Electronics Corporation 62 Barnes Industrial Road North Wallingford, Connecticut 06492	
CUSTOMER DRAWING			POWER SNAP, RIGHT ANGLE SOLDER MOUNT 18 AWG, 10 AMP		
DRAWN	DATE	APPROVED	DATE	<b>A</b>	SD01432G
PSM	03/08/07	DCam	05/16/07		
APPROVED	DATE	APPROVED	DATE	SH1 1 OF 1	REV D
XXX	XX/XX/XX	WPM	05/16/07		